



A Look beyond:
the **Cochrane Collaboration** as
example of successful evidence provision
in the health sector

Filip Cools, MD, PhD

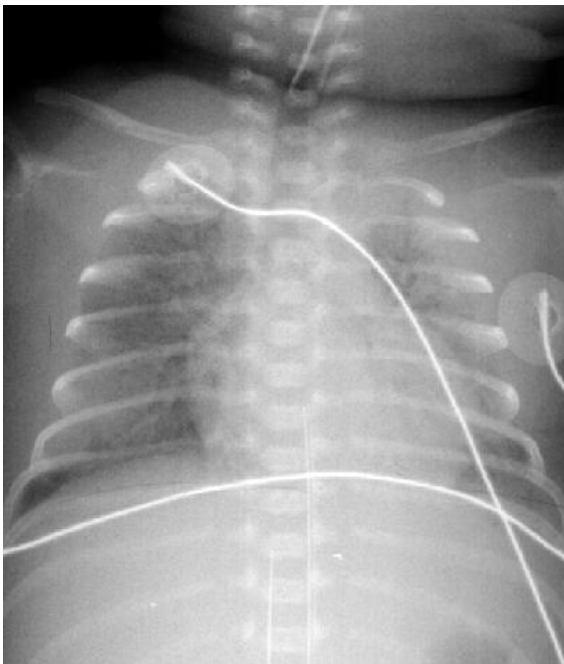


Belgian Centre for Evidence-Based Medicine
Belgian Branch of the Dutch Cochrane Center



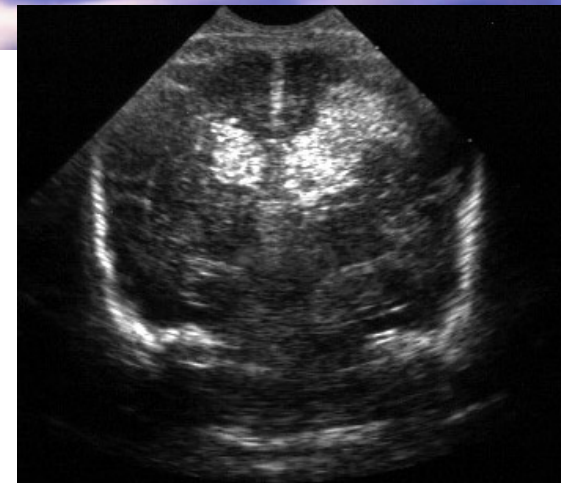
Dept Neonatology
Universitair Ziekenhuis Brussel

Premature birth



Immaturity of the lungs

Bleeding in the brain



Archie Cochrane



1979:

“It is surely a great criticism of our profession that we have not organised a critical summary, by specialty or subspecialty, adapted periodically, of all relevant randomised controlled trials.”

The UK Cochrane Center



National Perinatal Epidemiology Unit, Oxford, UK:

- **1985**
Register of perinatal randomized controlled trials
- **1985 – 1989**
International **collaboration** to prepare **systematic reviews** of controlled trials in pregnancy and childbirth and the neonatal period

The UK Cochrane Center

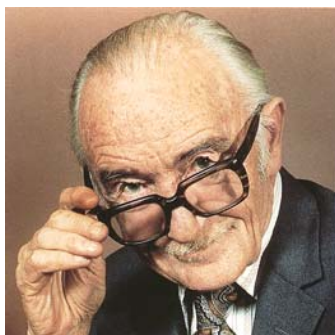


**National Perinatal Epidemiology Unit,
Oxford, UK:**

- **1989 – 1992**

Maintenance of systematic reviews of controlled trials of perinatal care in 6-monthly disk issues of an electronic journal, '*The Oxford Database of Perinatal Trials (ODPT)*'

International collaboration

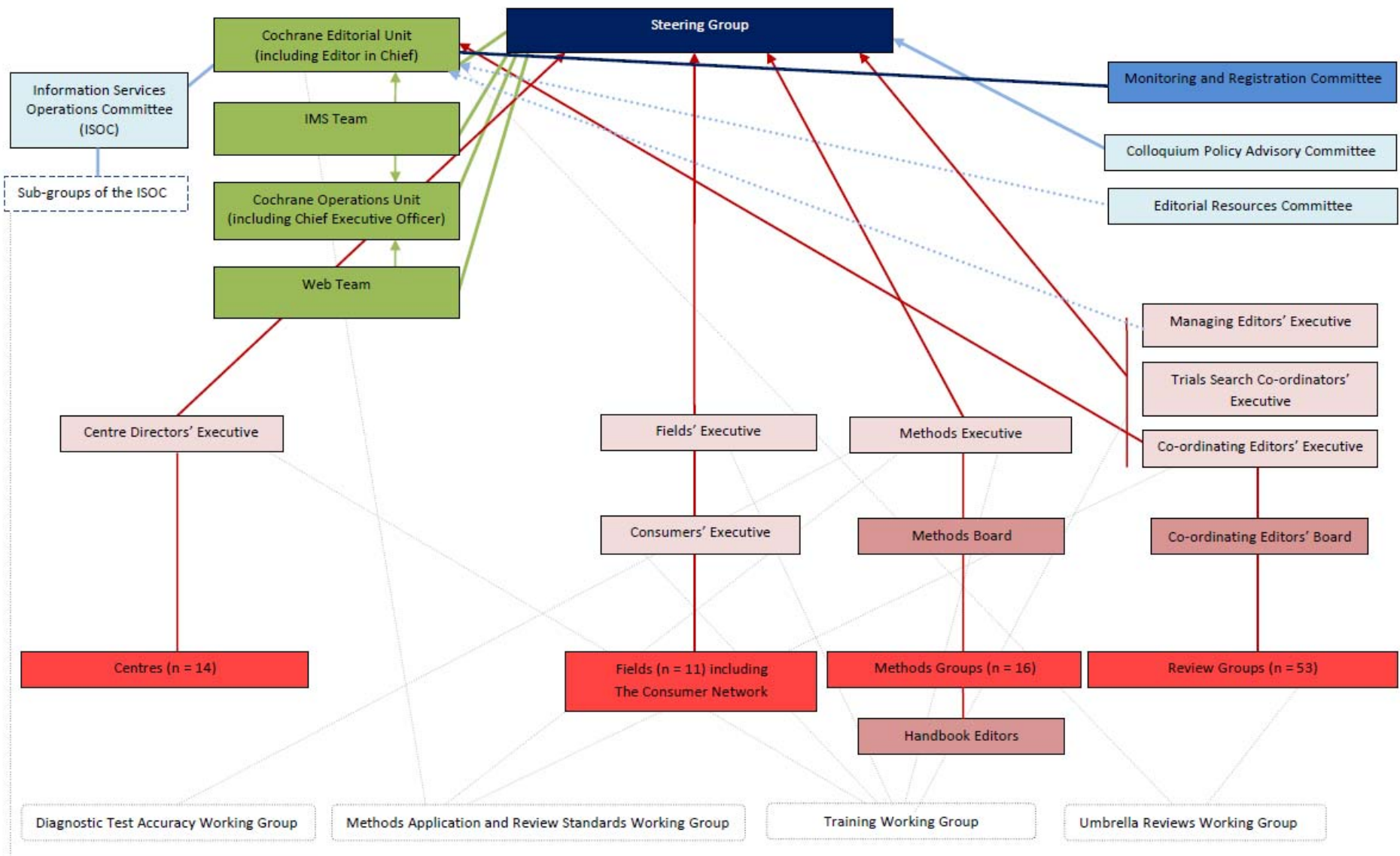


- **October 1992**
The “Cochrane **Centre**” opens in Oxford, UK
 - ✓ Pregnancy and Childbirth **review group**
 - ✓ Subfertility review group
 - ✓ Neonatal review group (March 1993)
- **October 1993 – First Cochrane Colloquium**
Launch of the Cochrane Collaboration
 - UK Centre, Canadian Centre, US Centre, Nordic Centre
 - Stroke review group, musculoskeletal review group



Cochrane Collaboration in 2012

- 28,000 people from over 100 countries
- help health care providers, policy-makers and patients make well-informed decisions about health care, based on the best available research evidence,
- by preparing, updating and promoting the accessibility of **Cochrane Systematic Reviews** (up to 5000 today) published online in *The Cochrane Library*.

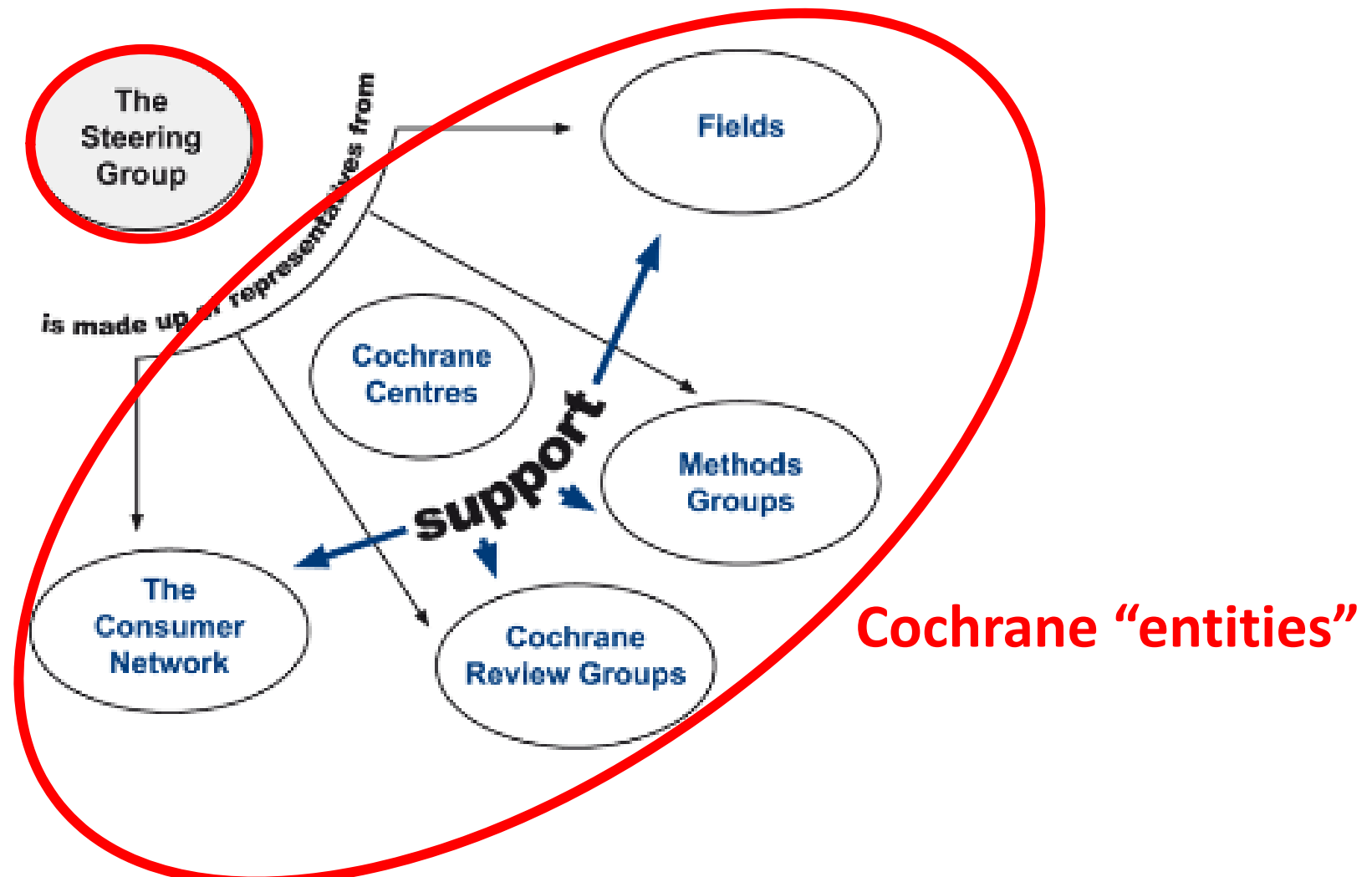


*Includes Archie Development Advisory Committee, Cochrane Register of Studies Project Board, Review Manager Advisory Committee, and Websites Committee.

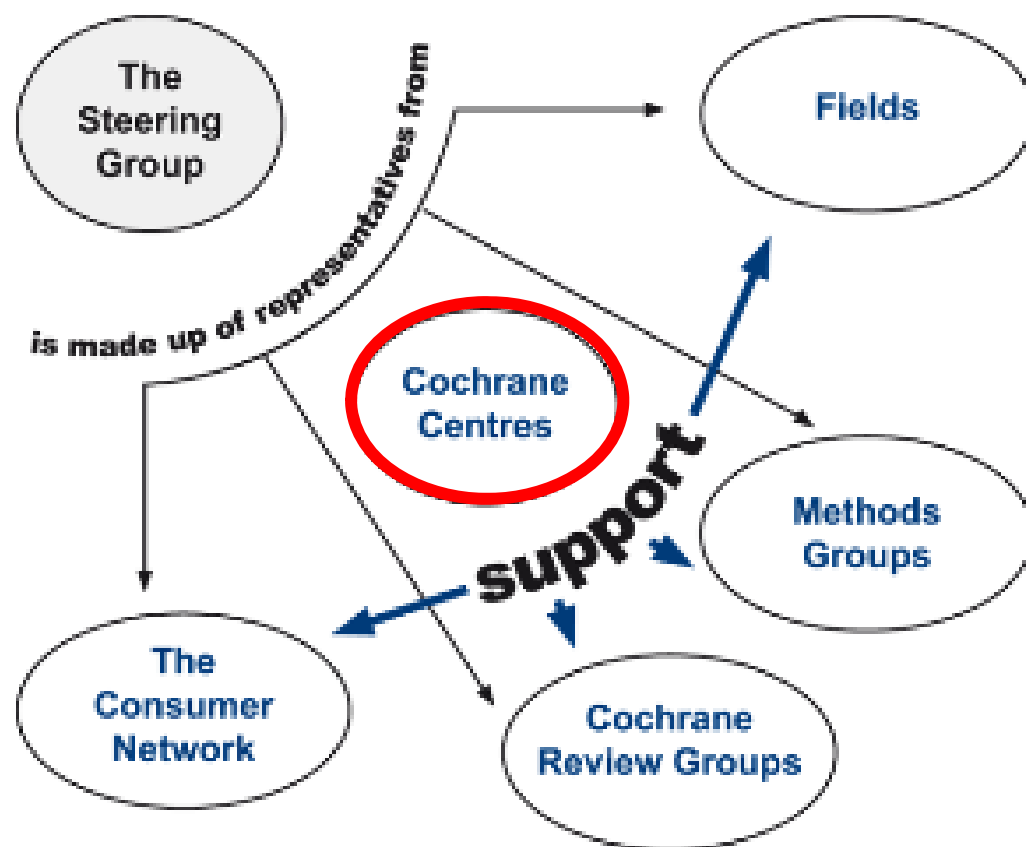
ACCOUNTABILITY AND REPORTING STRUCTURE OF THE COCHRANE COLLABORATION'S GROUPS AND COMMITTEES, 26 MARCH 2012



How is the CC structured?



Cochrane Centres & Branches



Cochrane Centres & Branches



Cochrane Centres & Branches

1. To **promote and represent** The Cochrane Collaboration.
2. To serve as a source of **information** about The Cochrane Collaboration.
3. To provide or facilitate **training** and **support** for review authors, editors, handsearchers and other contributors to The Cochrane Collaboration.
4. To promote **accessibility to *The Cochrane Library*** to healthcare professionals, patients and others, e.g. by pursuing national subscriptions and translations where necessary.

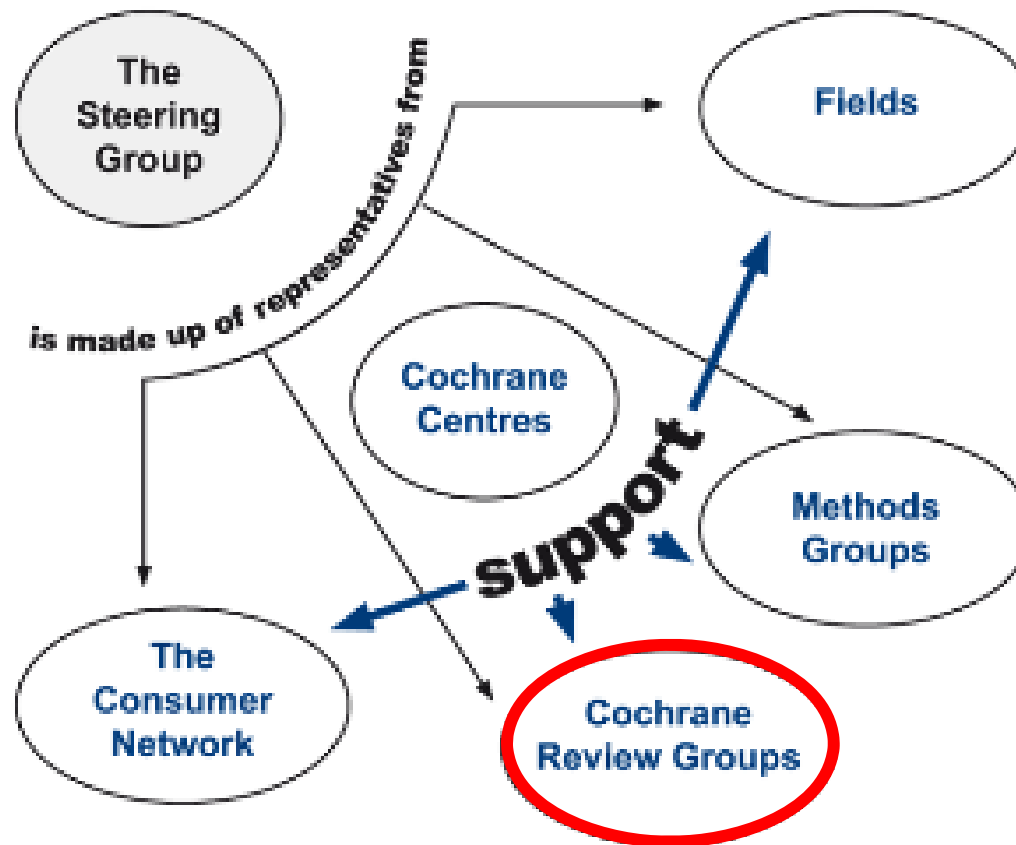
Cochrane Centres & Branches



CEBAM

Belgian Branch of the Dutch Cochrane Centre

Cochrane Review Groups



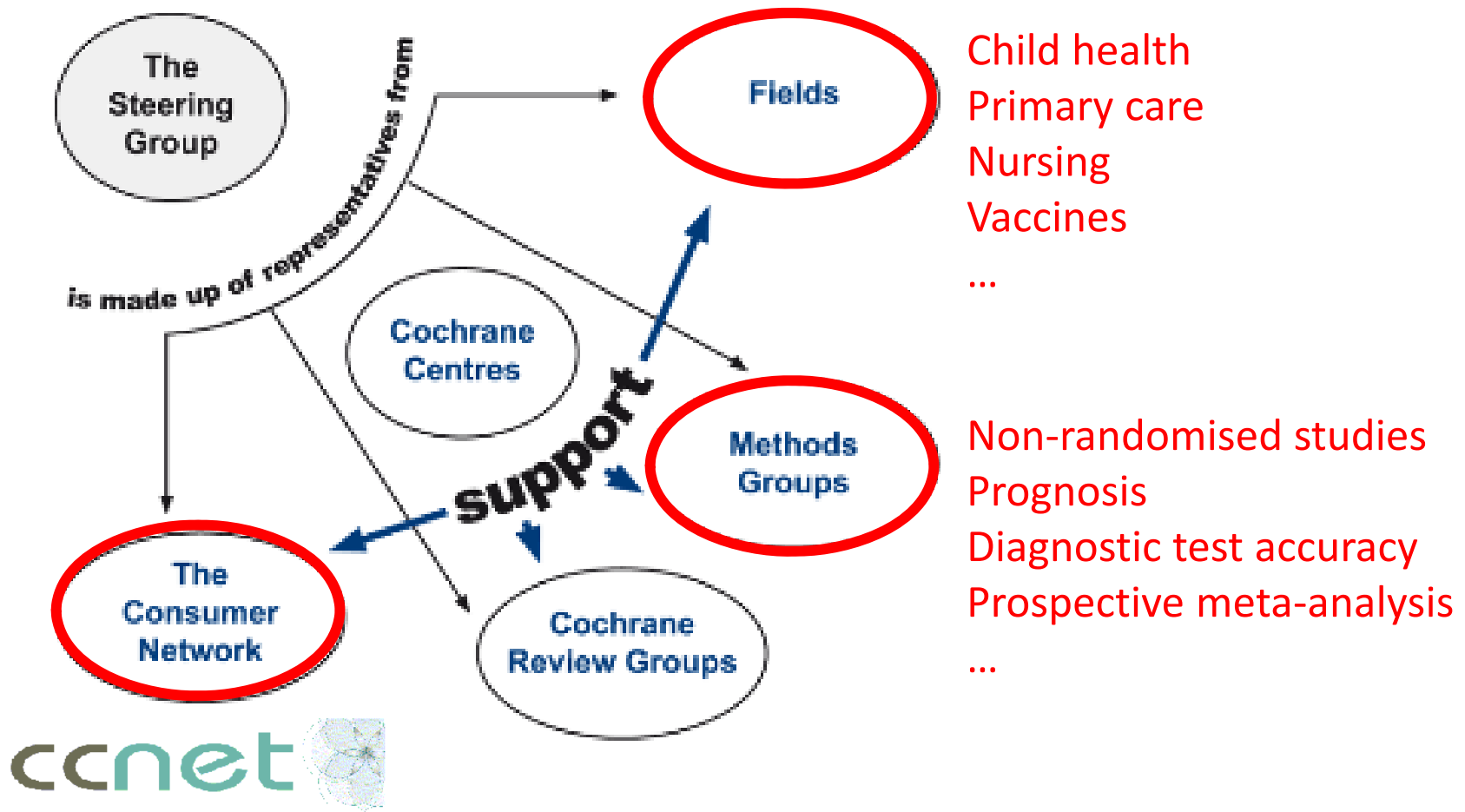
Cochrane Review Groups

- composed of persons from **around the world** who share an interest in developing and maintaining systematic reviews relevant to a **particular health area**.
- coordinated by an **editorial team** who edit and assemble completed reviews

Acute Respiratory Infections Group
Airways Group
Anaesthesia Group
Back Group
Bone, Joint and Muscle Trauma Group
Breast Cancer Group
Childhood Cancer Group
Colorectal Cancer Group
Consumers and Communication Group
Cystic Fibrosis and Genetic Disorders Group
Dementia and Cognitive Improvement Group
Depression, Anxiety and Neurosis Group
Developmental, Psychosocial and Learning Problems Group
Drugs and Alcohol Group
Ear, Nose and Throat Disorders Group
Effective Practice and Organisation of Care Group
Epilepsy Group
Eyes and Vision Group
Fertility Regulation Group
Gynaecological Cancer Group
HIV/AIDS Group
Haematological Malignancies Group
Heart Group
Hepato-Biliary Group
Hypertension Group
Incontinence Group

Infectious Diseases Group
Inflammatory Bowel Disease and Functional Bowel Disorders Group
Injuries Group
Lung Cancer Group
Menstrual Disorders and Subfertility Group
Metabolic and Endocrine Disorders Group
Methodology Review Group
Movement Disorders Group
Multiple Sclerosis Group
Musculoskeletal Group
Neonatal Group
Neuromuscular Disease Group
Oral Health Group
Pain, Palliative and Supportive Care Group
Peripheral Vascular Diseases Group
Pregnancy and Childbirth Group
Prostatic Diseases and Urologic Cancers Group
Public Health Group
Renal Group
Schizophrenia Group
Sexually Transmitted Diseases Group
Skin Group
Stroke Group
Tobacco Addiction Group
Upper Gastrointestinal and Pancreatic Diseases Group
Wounds Group

Other Cochrane entities



Consumers making a difference

Cochrane Consumer Network

[About CCNet](#)
[Contact us](#)
[Who's Who](#)
[Get Involved](#)
[Join CCNet](#)

What's new?

[CCNet Member Survey](#)
[Consumer Blog](#)

Special Projects

[Cochrane Summaries](#)
[Plain Language Expectations for Authors of Cochrane Summaries](#)
[PubMed Health and Cochrane Plain Language Summaries](#)

Resources

[Cochrane Consumer Learning](#)
[Papers and Reports](#)
[Presentations](#)



Get involved with CCNet members...

Become a [Consumer Referee!](#)

E-mail for more information
ccnet-contact@cochrane.de

[Cochrane Summaries](#) [Receives Award!](#)



Do more with [Cochrane Consumer Learning](#)

[Quick links](#)

[Cochrane Summaries](#)

[About CCNet](#)

[What's new?](#)

[Resources](#)

[Join CCNet](#)

Search

Search

Share on:

[+](#) [Share / Save](#) [f](#) [t](#) [g+](#) [d](#)

Our news

[The Knowledgeable Patient: Communication and Participation in Health - A Cochrane Handbook by Sophie Hill.](#)

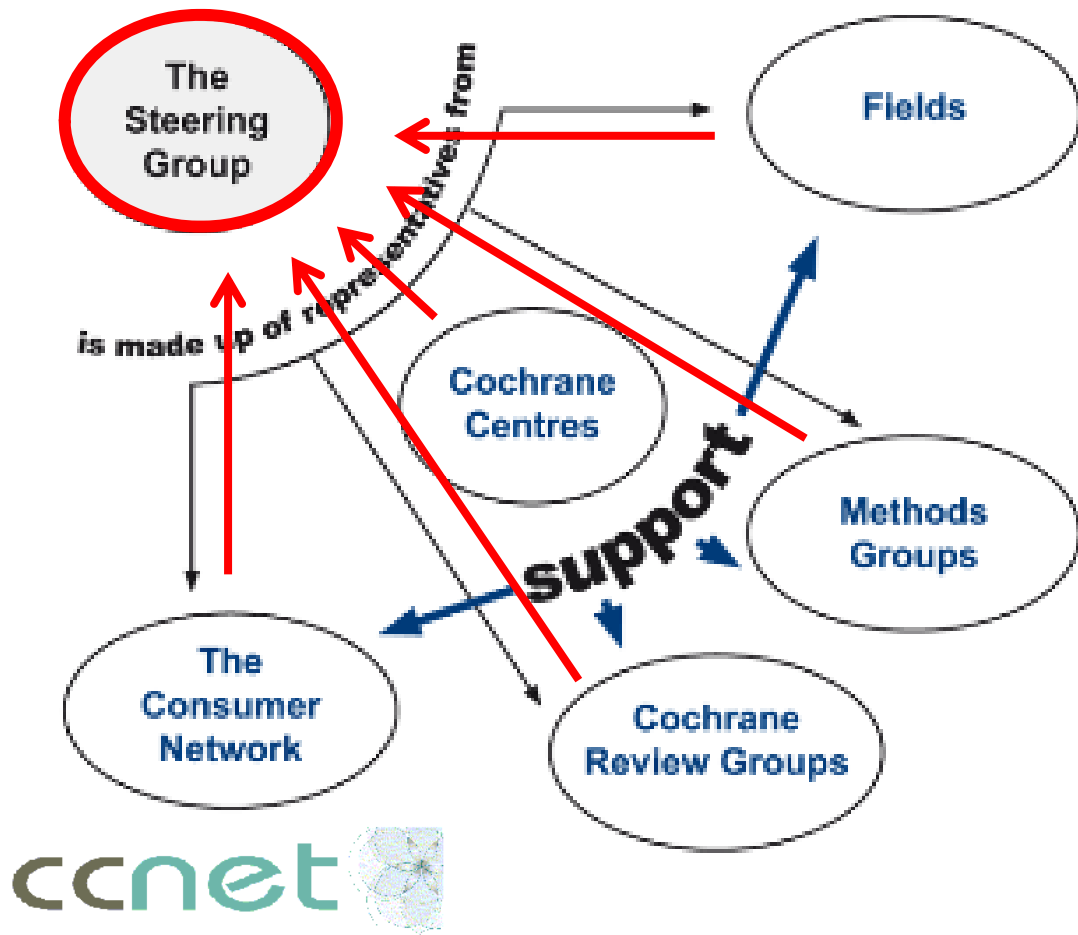
[Consumer Stories for Wise Consumer Health Month!](#)

[Cochrane Summaries Receives Award](#)

 [\[News room \]](#)

Cochrane Consumer Blog

Cochrane Steering group



Cochrane Database of Systematic Reviews

- High-quality, systematic overviews of the existing evidence about the effects of a specific intervention in health care
- Published in *The Cochrane Library*
- More than 5000 reviews (completed / in protocol phase)
- Updated monthly
- Available online / CD-rom



SEARCH THE COCHRANE LIBRARY

Title, Abstract or Keywords ▾

GO

HOME

SIGN UP

LEARN

ACCESS

HELP

or try an [Advanced Search](#)



Notice to all users: The next issue of The Cochrane library will be launched today. There may be some disruption to services whilst the latest updates are made live. We apologise for any inconvenience caused.

BROWSE COCHRANE DATABASE OF SYSTEMATIC REVIEWS

Issue 5 of 12, May 2012

[Anaesthesia & pain control](#) (196)

[Blood disorders](#) (115)

[Cancer](#) (386)

[Child health](#) (1425)

[Complementary & alternative medicine](#) (524)

[Consumer & communication strategies](#) (43)

[Dentistry & oral health](#) (130)

[Developmental, psychosocial, & learning problems](#) (97)

[Ear, nose, & throat](#) (123)

[Expand](#)

[Other Browse Options](#)

COCHRANE CENTRAL REGISTER OF CONTROLLED TRIALS (CENTRAL)

[Search for trials](#) Issue 5 of 12, May 2012

BROWSE OTHER RESOURCES

SPECIAL COLLECTIONS



Physical activity and exercise for health and well being of older people



World Kidney Day 2012: kidneys for life



Exercise for musculoskeletal conditions

[View all](#)

EDITORIAL

Hospital at home in chronic obstructive pulmonary disease: is it a viable option?



Innovative approaches aimed at reducing reliance on acute hospitals are being explored by providers of health systems around the world. These approaches reflect concern about the suitability of the hospital environment for people with complex healthcare problems who are often in need of some form of rehabilitation. The high cost of hospital-based care is also a major driver...

[Read more](#) | [View archive](#)



HIGHLIGHTED NEW AND UPDATED COCHRANE REVIEWS

[Cold-water immersion \(cryotherapy\) for preventing and treating muscle soreness after exercise](#)

[Disposable surgical face masks for preventing surgical wound infection in clean surgery](#)

[Training health professionals in smoking cessation](#)

[Bisphosphonates in multiple myeloma](#)

How do we collaborate in the CC?

- Cochrane **website**
- E-mail





The Cochrane Collaboration

Working together to provide the best evidence for health care

to The Cochra

[Home](#)

[About us](#)

[Cochrane Reviews](#)

[News & Events](#)

[Training](#)

[Multimedia](#)

[Contact](#)

[Community](#)

[Home](#) > [Contact](#) > [Review Groups](#)

Contact

[Operations Unit and Editorial Unit](#)

[Interim Executive Director](#)

[Steering Group and Subgroups](#)

[Cochrane Centre for your country](#)

[Centres and Branches](#)

[Review Groups](#)

[Methods Groups](#)

[Fields and Networks](#)

[+ Share / Save](#)

Review Groups

[Acute Respiratory Infections Group](#)

[Airways Group](#)

[Anaesthesia Group](#)

[Back Group](#)

[Bone, Joint and Muscle Trauma Group](#)

[Breast Cancer Group](#)

[Childhood Cancer Group](#)

[Colorectal Cancer Group](#)

Acute Respiratory Infections Group

Liz Dooley

Faculty of Health Sciences and Medicine

Bond University

Gold Coast Queensland 4229

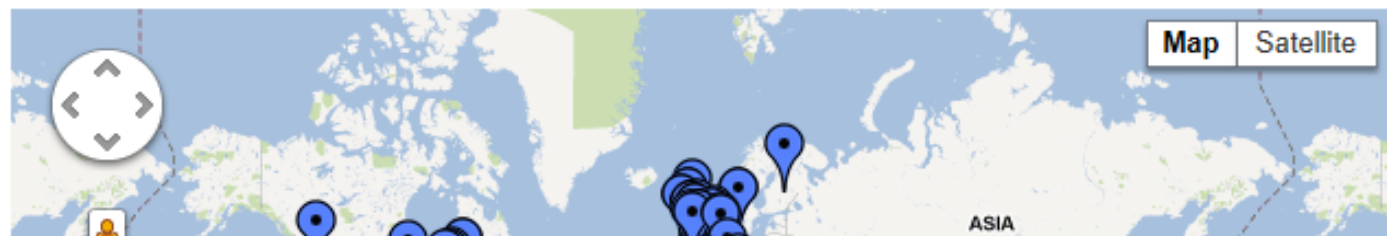
Australia

Phone: +61 7 5595 5545

Fax: +61 7 5595 1271

Email: ldooley@bond.edu.au

Homepage: ari.cochrane.org



How do we collaborate in the CC?

- Cochrane **website**
- E-mail



- Central Cochrane server: **Archie**
 - Interface between collaborators - administration
 - Manages all the Cochrane reviews

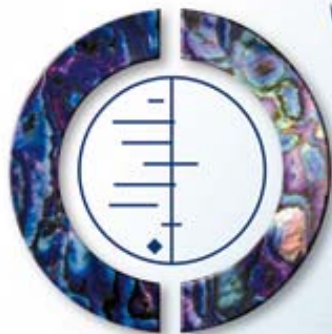


Resources	Title	Contact Person	Rev No	Write Phase
<div style="display: flex; justify-content: space-between;"> Resources Active 317 </div>				
<ul style="list-style-type: none"> [-] The Cochrane Collaboration <ul style="list-style-type: none"> [+] Favourites [+] Back Group [-] Belgian Branch of the D... <ul style="list-style-type: none"> [+] People [+] Files [+] Centre Directors' Forum [+] Child Health Field [+] Individual Participant Dat... [-] Neonatal Group <ul style="list-style-type: none"> [+] People [+] Module [-] Reviews <ul style="list-style-type: none"> [+] Full Reviews [+] Protocols [+] Registered Titles [+] Files [+] Workflows [+] Pain, Palliative and Supp... [+] Screening and Diagnosti... 	<ul style="list-style-type: none"> <input type="checkbox"/> [R] Acupuncture for hypoxic ischemic encephalopathy in <input type="checkbox"/> [R] Ad libitum or demand/semi-demand feeding versus sc <input type="checkbox"/> [R] Adrenaline for prevention of morbidity and mortality in <input type="checkbox"/> [R] Aerosolized diuretics for preterm infants with (or dev <input type="checkbox"/> [R] Air versus oxygen for resuscitation of infants at birth <input type="checkbox"/> [R] Albumin infusion for low serum albumin in preterm ne <input type="checkbox"/> [R] Allopurinol for preventing mortality and morbidity in ne <input type="checkbox"/> [R] Alpha-1 proteinase inhibitor (a1PI) for preventing chr <input type="checkbox"/> [R] Animal derived surfactant extract for treatment of res <input type="checkbox"/> [R] Animal derived surfactant extract versus protein free <input type="checkbox"/> [R] Antibiotic regimens for suspected early neonatal sep <input type="checkbox"/> [R] Antibiotic regimens for suspected late onset sepsis ir <input type="checkbox"/> [R] Antibiotic regimens for the empirical treatment of new <input type="checkbox"/> [R] Anticonvulsants for neonates with seizures <input type="checkbox"/> [R] Anticonvulsants for preventing mortality and morbidity <input type="checkbox"/> [R] Antifungal therapy for newborn infants with invasive <input type="checkbox"/> [R] Antistaphylococcal immunoglobulins to prevent staphy <input type="checkbox"/> [R] Antithrombin for respiratory distress syndrome in pre <input type="checkbox"/> [R] Antiviral agents for treatment of herpes simplex virus <input type="checkbox"/> [R] Arginine supplementation for prevention of necrotisin <input type="checkbox"/> [R] Audio recordings of consultations with doctors for pa <input type="checkbox"/> [R] Avoidance of bottles during the establishment of brea <input type="checkbox"/> [R] Banked preterm versus banked term human milk to pr <input type="checkbox"/> [R] Base administration or fluid bolus for preventing morb <input type="checkbox"/> [R] Body positioning for spontaneously breathing preterm 	<ul style="list-style-type: none"> ☆ Wong, Virginia ☆ McGuire, William ☆ Paradisis, Mary ☆ Brion, Luc P ☆ Davis, Peter G ☆ Jardine, Luke A ☆ McGuire, William ☆ Shah, Prakeshkuma ☆ Seger, Nadine ☆ Soll, Roger ☆ Mtitimila, Edward I ☆ Gordon, Adrienne ☆ Shah, Dharmesh ☆ Booth, David ☆ Young, Leslie ☆ McGuire, William ☆ Shah, Prakeshkuma ☆ Bassler, Dirk ☆ Walker, Karen S ☆ Shah, Prakeshkuma ☆ Koh, Guan ☆ Collins, Carmel T ☆ Dempsey, Eugene ☆ Lawn, Cassie J ☆ Bredemeyer, Sandi 	<ul style="list-style-type: none"> MP1 004 2 0013 0001 001 2 6996 3 	<ul style="list-style-type: none"> ● ○ Editorial ● Authoring ● Authoring ● ○ Authoring ● ○ Authoring ● ○ Authoring ● ○ Editorial ● Authoring ● ○ Editorial ● Authoring ● Authoring ● ○ Editorial ● Authoring ● ○ Authoring ● Editorial ● ○ Authoring ● Authoring ● Authoring ● ○ Authoring ● Authoring ● ○ Authoring ● Authoring ● ○ Authoring

How do we collaborate in the CC?

- Cochrane **website**
- E-mail
- Central Cochrane server: **Archie**
- **Meetings**
 - Annual Cochrane colloquium
 - Mid-year meeting





20th

COCHRANE COLLOQUIUM

30 SEPTEMBER - 3 OCTOBER · 2012
PULLMAN HOTEL · AUCKLAND
NEW ZEALAND

EVIDENCE



Home

Key dates

- ▶ Registration Information
- ▶ Scientific Programme
- ▶ Call for abstracts
- ▶ Workshops
- ▶ Meetings
- Colloquium Venue
- Accommodation
- Social Events
- ▶ Auckland & more
- ▶ Stipends
- ▶ Prizes and Awards
- Contact

Kia ora and Haere Mai (Welcome)

Meeting submission and stipends application are now open!

Welcome to the 20th Cochrane Collaboration Colloquium which will be held in Auckland from 30 September to 3 October 2012. Planning is now well underway and we are preparing an exciting scientific programme and a varied social schedule that gives you an opportunity to enjoy the sights and culture of our lovely city.

New Zealand is increasingly a nation of many different cultures but the flavour is predominantly Polynesian. Auckland (New Zealand's largest city) is the largest Polynesian city in the world and we enjoy the vibrant culture that comes from the many Maori and Pacific inhabitants. Auckland is built on a narrow isthmus between two large bodies of water, the Pacific Ocean and the Tasman Sea. As a result the climate is temperate and we have many beautiful beaches to visit.

The venue is the Pullman Hotel and we have been fortunate in booking the whole venue. There are other options for accommodation nearby. The hotel is close to the University, the central business district and our beautiful harbour.

In the next few months we will be preparing the meeting programme and we would welcome any suggestions on content and topics for inclusion.

Yours

Related resou

- The Cochrane
- The Cochrane
- Past and futur Colloquia
- Abstracts from

Latest news fr

- Steering G now availal
- Invitation to drafting Co interventior World Heal
- Pre-hospita Emergency registered

E-mail: *

Password: *

Log in

[Create new account](#)
[Request new password](#)



What makes the CC a successful network?

1. Equal partnerships

- Researchers, providers, practitioners, patients
- Cochrane reviews are produced by, and are relevant to, everyone interested in the effects of human health care
- Built on the enthusiasm to produce high quality evidence about the effects of health care interventions

What makes the CC a successful network?

2. No geographical boundaries

- Cochrane Collaboration's contributors are a mix of volunteers and paid staff who are affiliated to the organisation through Cochrane *entities*
- There is no one place or office that is 'The Cochrane Collaboration'.
- Each entity is a 'mini-organisation' in itself, with its own funding, website and workload

What makes the CC a successful network?

3. Independent (!)

- independent, not-for-profit, funded by a variety of sources including governments, universities, hospital trusts, charities and personal donations.
- The CC does not accept commercial or conflicted funding

What makes the CC a successful network?

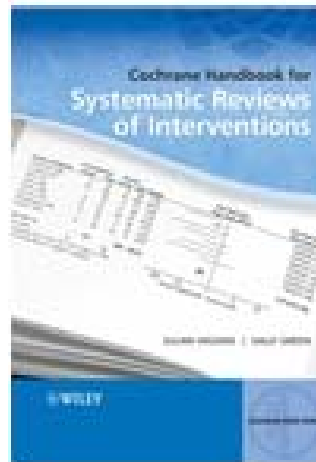
3. Democratic leadership

- Steering Group provides policy and strategic leadership for the organisation
- All entities are represented in the Steering Group
- Members of the Steering Group are elected every 3 years

What makes the CC a successful network?

4. High quality Cochrane systematic reviews

- Strict and transparent methodology
- Cochrane Handbook



- Front page
- Handbook information
 - About...
 - How to cite this version of the Handbook
 - Central sources of support
 - Acknowledgements
 - Major contributors
- Part 1: Cochrane reviews
 - 1 Introduction
 - 1.1 The Cochrane Collaboration
 - 1.2 Systematic reviews
 - 1.3 About this Handbook
 - 1.4 Contributors to the Handbook
 - 1.5 Chapter information
 - 1.6 References
 - 2 Preparing a Cochrane review
 - 3 Maintaining reviews: updates, amendments
 - 4 Guide to the contents of a Cochrane review
- Part 2: General methods for Cochrane reviews
- Part 3: Special topics
- Additional material

Cochrane Handbook for Systematic Reviews of Interventions



THE COCHRANE
COLLABORATION®

Version 5.1.0

[updated March 2011]

Editors: Julian PT Higgins and Sally Green

What makes the CC a successful network?

4. High quality Cochrane systematic reviews

- Strict and transparent methodology
- Cochrane Handbook
- Cochrane format using Review Manager software



Review Manager 5.1

File Edit Format View Tools Table Window Help

[Elective_high_frequency_oscillatory_ventilation_versus_conventional_ventilation_for_acute_pulmonary_dysfunction_in_preterm_infants.rm5] Electi...

Text of Review

Elective high frequency oscillatory ventilation versus conventional ventilation for acute pulmonary dysfunction in preterm infants

Review information

Review number: 008

Authors

Filip Cools¹, David J Henderson-Smart², Martin Offringa³, Lisa M Askie⁴

¹Neonatology, Universitair Ziekenhuis Brussel, Brussels, Belgium
²NSW Centre for Perinatal Health Services Research, Queen Elizabeth II Research Institute, Sydney, Australia
³Pediatrics, H3-145, Academic Medical Center, Amsterdam, Netherlands
⁴NHMRC Clinical Trials Centre, University of Sydney, Camperdown, Australia

Citation example: Cools F, Henderson-Smart DJ, Offringa M, Askie LM. Elective high frequency oscillatory ventilation versus conventional ventilation for acute pulmonary dysfunction in preterm infants. Cochrane Database of Systematic Reviews 2009, Issue 3. Art. No.: CD000104. DOI: 10.1002/14651858.CD000104.pub3.

Contact person

Filip Cools
Neonatology

Intervention review

- Title
- Review information
- Main text
 - Abstract
 - Plain language summary
 - Background
 - Objectives
 - Methods
 - Results
 - Discussion
 - Authors' conclusions
 - Acknowledgements
 - Contributions of authors
 - Declarations of interest
 - Differences between versions
 - Published notes
- Tables
 - Characteristics of studies
 - Summary of findings table
 - Additional tables
- Studies and references
 - References to studies
 - Other references
- Data and analyses
 - 1 HFOV vs CV (all trials)
 - 2 HFOV vs CV subgroup
 - 3 HFOV vs CV subgroup
 - 4 HFOV vs CV subgroup
 - 5 HFOV vs CV subgroup

What makes the CC a successful network?

4. High quality Cochrane systematic reviews

- Strict and transparent methodology
- Cochrane Handbook
- Cochrane format using Review Manager software
- Peer review process of both the review protocol as well as the review itself



What are major challenges for the CC?

- 1. To ensure high quality Cochrane Reviews are available across a broad range of healthcare topics.**
 - Methodological expertise in review teams
 - Provide training for authors
 - Give support to authors

What are major challenges for the CC?

2. To promote access to Cochrane Reviews and the other products of The Cochrane Collaboration.

- National subscriptions (Ireland, UK, Australia, Canada, Denmark, ...)
- Digital Library for Health (Belgium)
- Video's, podcasts, webinars, twitter, facebook, ...

What are major challenges for the CC?

3. To ensure an efficient, transparent organisational structure and management system for The Cochrane Collaboration..

- The CC is outgrowing itself!
- Accountability of entities (e. g. Cochrane centres have to complete a “monitoring form”)
- Communication between entities!

What are major challenges for the CC?

4. To achieve sustainability of The Cochrane Collaboration.

- FUNDING !!
- Funding from subscriptions to Cochrane Library for “central functions” of the CC (management system, website, research projects, ...)
- Cochrane entities have a variety of funding sources (national governments, universities, hospitals, private foundations, personal donations, ...)
- No commercial funding !!

What are major challenges for the CC?

“Strategic plan”

- Publication of an up-to-date, organisation-wide **set of strategies** designed to fulfill the Collaboration’s four principal goals.
- Revised every 2-3 years
- Action points to meet the 4 goals of the CC



“Being part of The Cochrane Collaboration is more than a publication or a job. It's a network of colleagues, advisors and friends that spans the globe - an incomparable opportunity to learn, collaborate and share with some amazing people.”

Miranda Cumpston, Cochrane Training Co-ordinator, based at the Australasian Cochrane Centre